



1011 Pacific Street
San Luis Obispo, CA

Property Description:

Size: 1,375 Square Feet
3,127 Square Feet
4,500 Square Feet

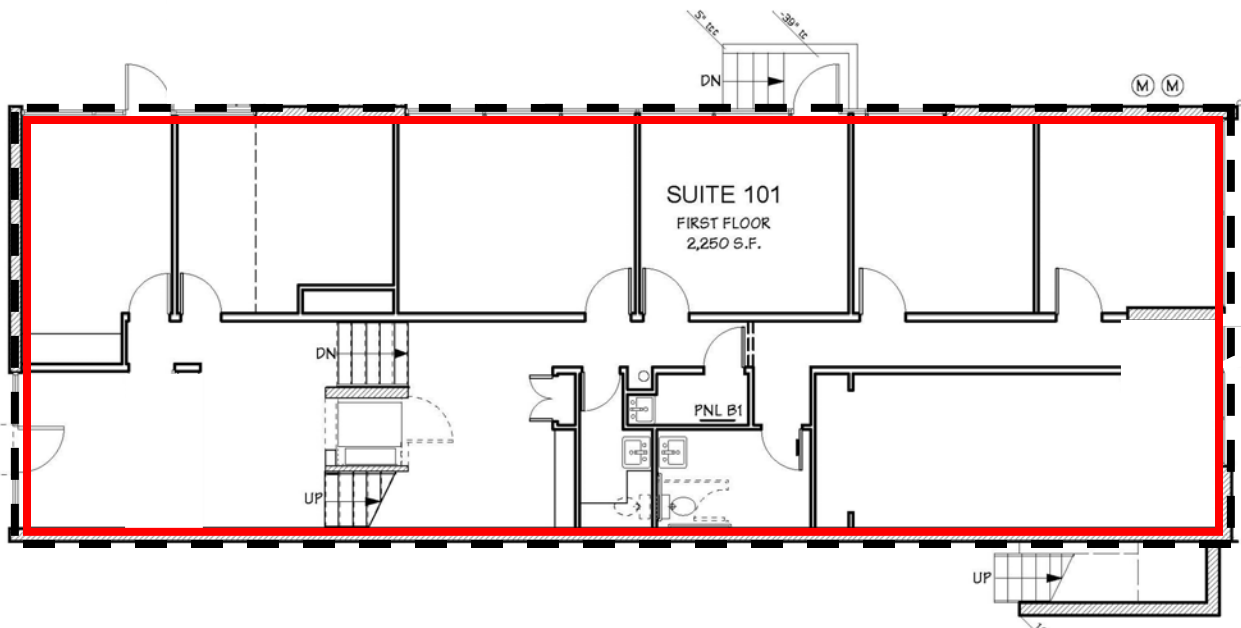
Price: \$2.25/Square Foot, NNN (\$0.50)

Type: Office

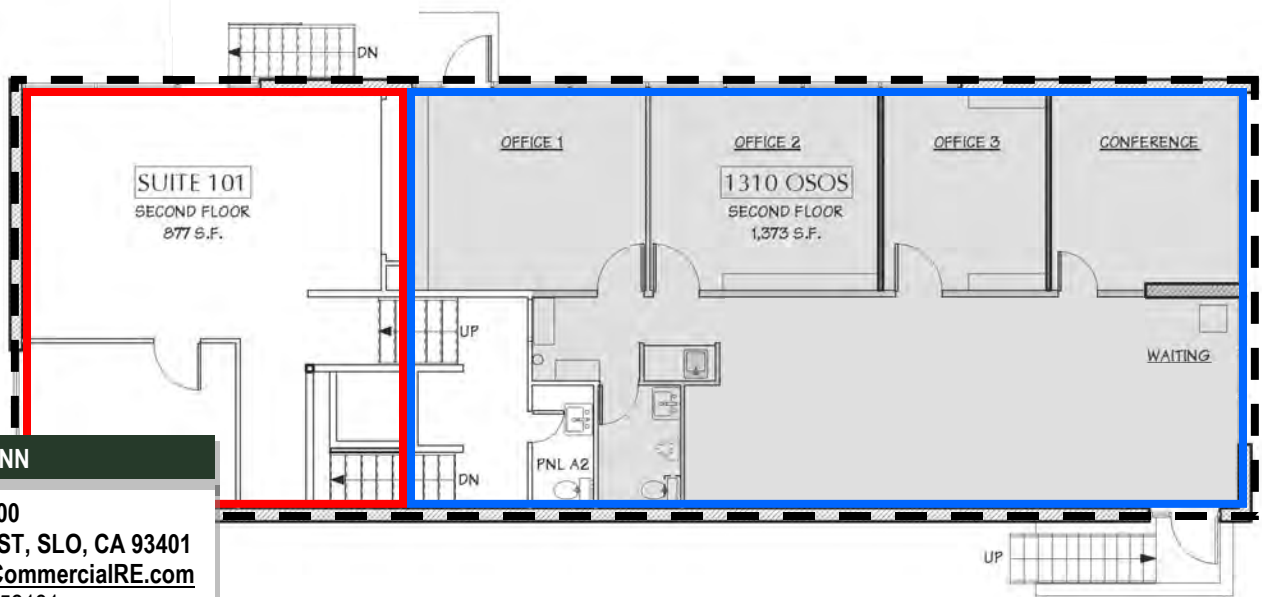
Notes: Newly remodeled mid-century office in Downtown San Luis Obispo with on-site parking. The building has new windows and a new roof. ADA parking upgrades are underway and new landscaping will be installed. Owner will consider interior improvements depending upon specs and lease term.

DEREK SENN

805.543.1400
798 PALM ST, SLO, CA 93401
AndersonCommercialRE.com
DRE #001252131

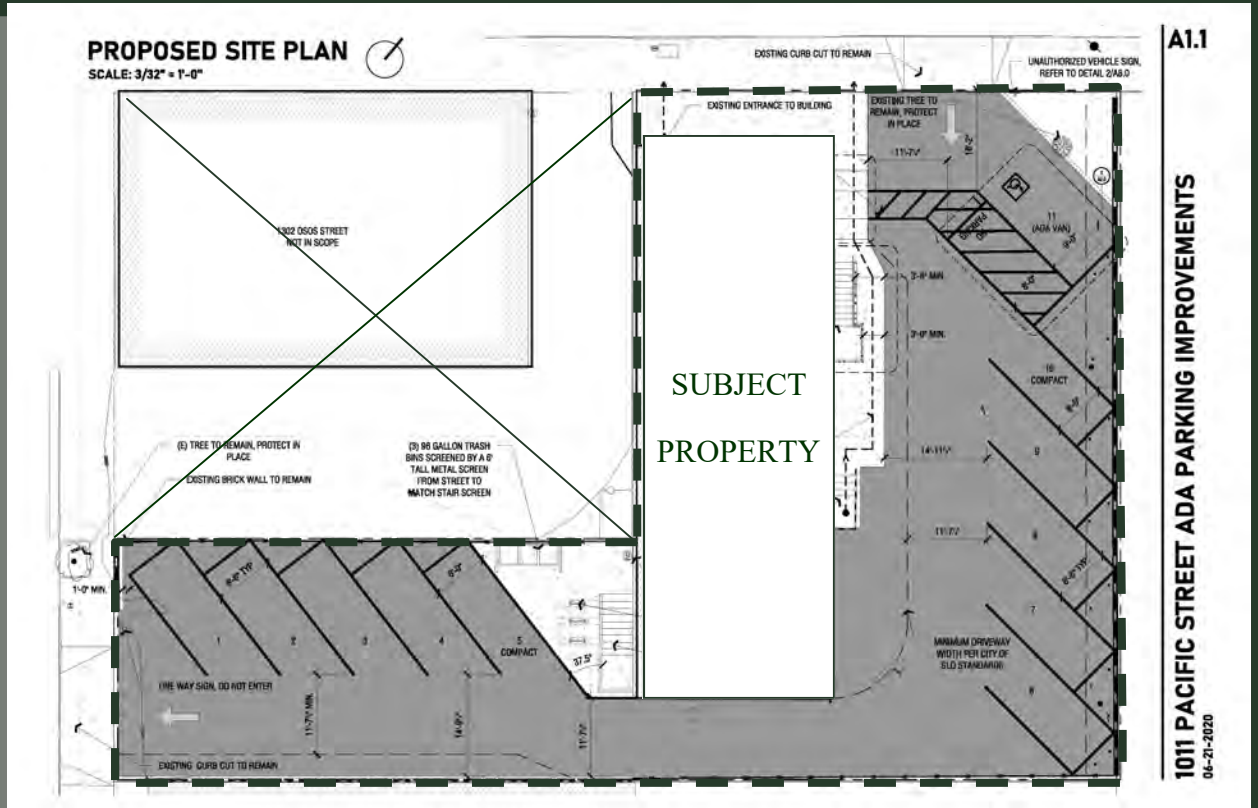


1,375 SF 3,127 SF 4,500 SF



DEREK SENN

805.543.1400
798 PALM ST, SLO, CA 93401
AndersonCommercialRE.com
DRE #001252131



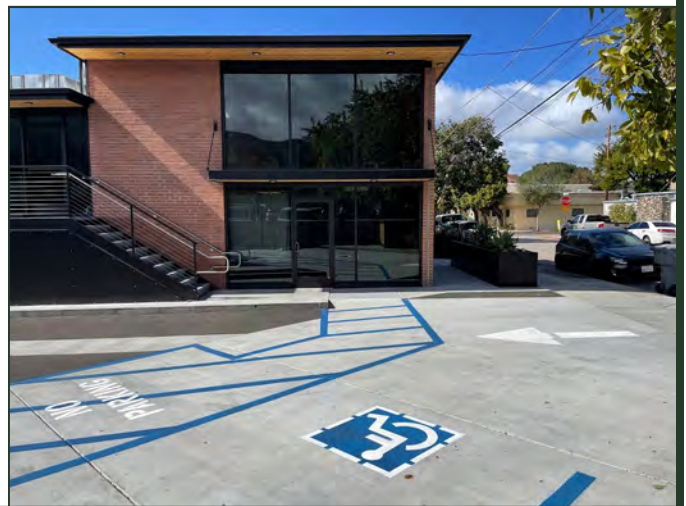
DEREK SENN

805.543.1400
798 PALM ST, SLO, CA 93401
AndersonCommercialRE.com
DRE #001252131

ANDERSON COMMERCIAL

REAL ESTATE SERVICES

1011 PACIFIC



DEREK SENN

805.543.1400
798 PALM ST, SLO, CA 93401
AndersonCommercialRE.com
DRE #001252131

1310

ANDERSON COMMERCIAL

REAL ESTATE SERVICES

1011 PACIFIC



DEREK SENN

805.543.1400
798 PALM ST, SLO, CA 93401
AndersonCommercialRE.com
DRE #001252131

ANDERSON COMMERCIAL

REAL ESTATE SERVICES

1011 PACIFIC



DEREK SENN
805.543.1400
798 PALM ST, SLO, CA 93401
AndersonCommercialRE.com
DRE #001252131