



1101 Monterey Street, Suite 210
Downtown San Luis Obispo

Property Description:

Location: Corner of Santa Rosa (Hwy 1) and Monterey Street

Size: 5,896 Square Feet (potential split to 3,302 SF and 2,594 SF)

Rent: \$3.15/SF, NNN (system furniture is negotiable)

Type: Office

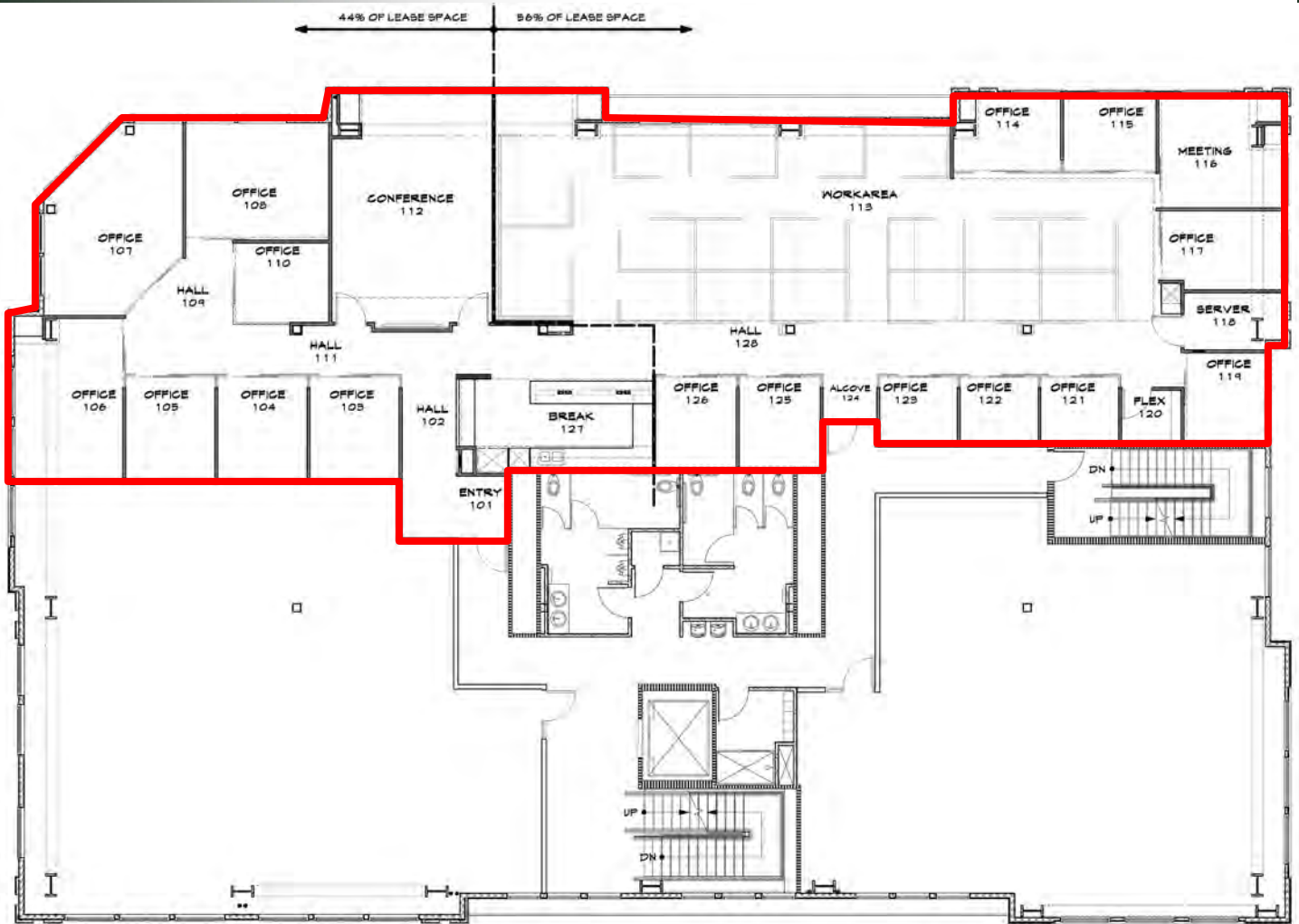
Notes: A stunning suite with sixteen glass offices, two conference rooms, a server room and a kitchen/break area. There is a large open space with eighteen brand new workstations, which are negotiable. The second floor suite is elevator-served.

Sublessor will consider splitting the suite if need be. The southerly 2,594 SF suite would consist of seven private offices, a large conference room, and a kitchenette. The rear 3,302 SF suite would consist of ten private offices and an open area that can accommodate eighteen workstations.

1101 Monterey Street is downtown San Luis Obispo's newest retail and office building. It offers a centralized location and excellent exposure.

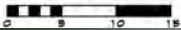
DEREK SENN

805.543.1400
798 PALM ST, SLO, CA 93401
AndersonCommercialRE.com
DRE #001252131



1101 MONTEREY
SUITE 210

12.10.20



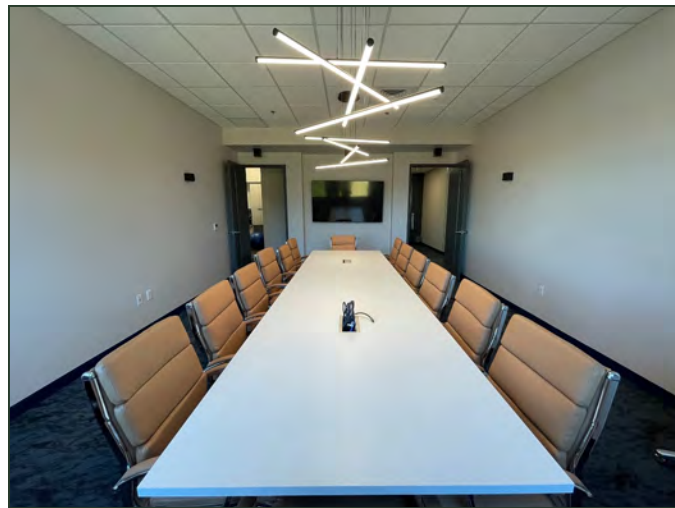
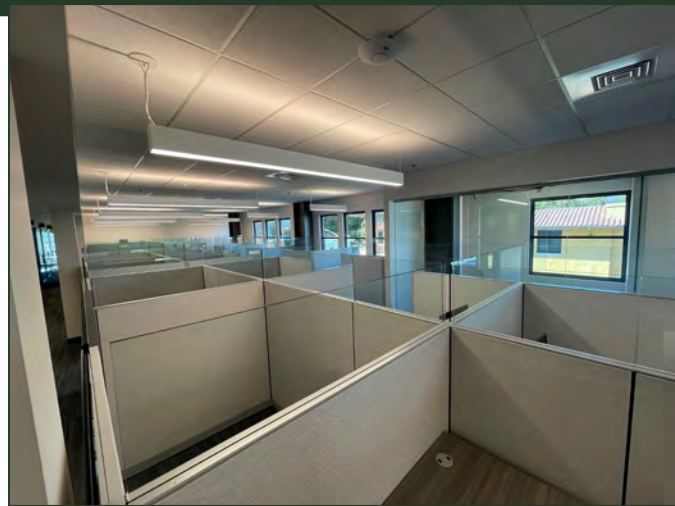
DEREK SENN

805.543.1400
798 PALM ST, SLO, CA 93401
AndersonCommercialRE.com
DRE #001252131

ANDERSON COMMERCIAL

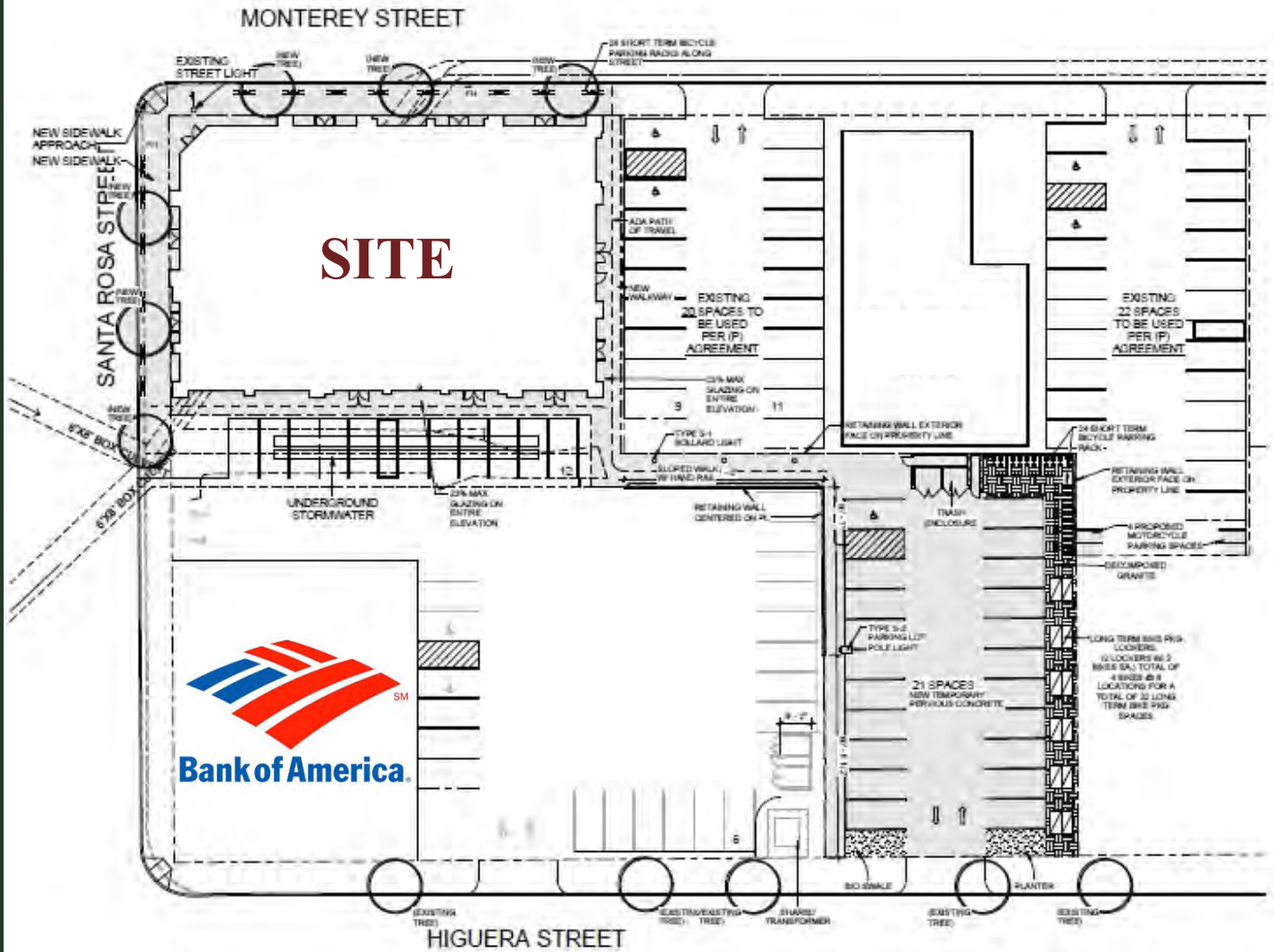
REAL ESTATE SERVICES

1101 MONTEREY #210



DEREK SENN

805.543.1400
798 PALM ST, SLO, CA 93401
AndersonCommercialRE.com
DRE #001252131



DEREK SENN

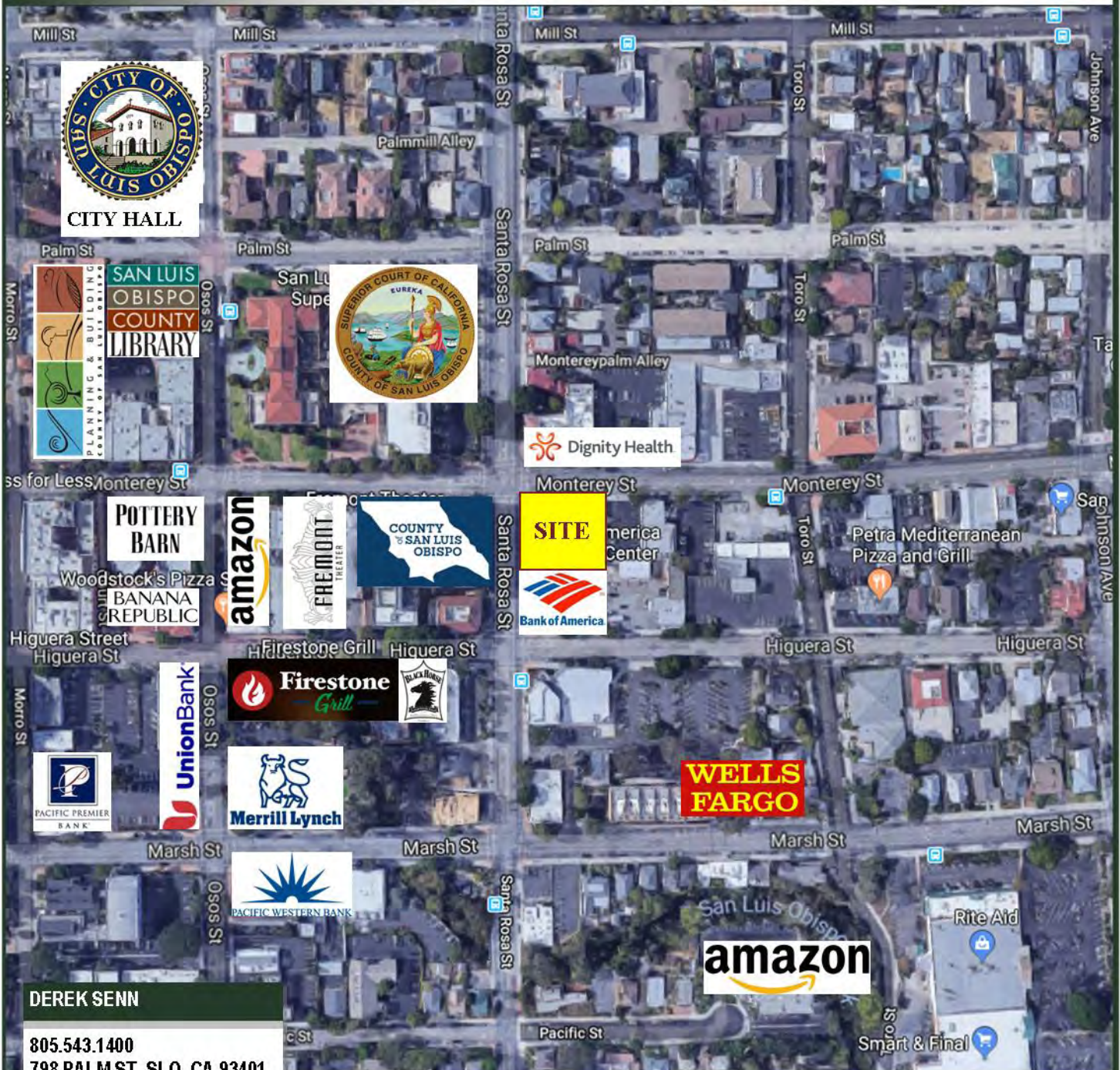
805.543.1400
798 PALM ST, SLO, CA 93401
AndersonCommercialRE.com
DRE #001252131

ANDERSON COMMERCIAL

REAL ESTATE SERVICES

1101 MONTEREY

#210



DEREK SENN

805.543.1400
798 PALM ST, SLO, CA 93401
AndersonCommercialRE.com
DRE #001252131