



## 1150 Osos Street, Suite 203

### Property Description:

City: San Luis Obispo, California

Size: 972 Square Feet

Price: \$2.75/SF, NNN (\$0.74/SF/Month; includes heat, air and electric)

Type: Office

Parking: Three reserved on-site spaces

Notes: This office is located in the heart of Downtown San Luis Obispo. It is a second floor corner office and has an efficient layout with two private offices, a reception area, kitchenette and work area. The suite comes with three on-site reserved parking spaces.

The previous tenant upgraded the suite with high-end finishes. It is one of the nicest office suites in San Luis Obispo.

**MARK ANDERSON**

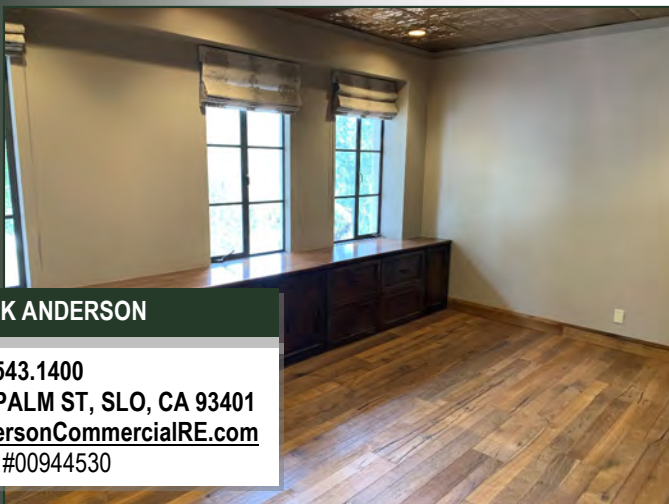
805.543.1400  
798 PALM ST, SLO, CA 93401  
[AndersonCommercialRE.com](http://AndersonCommercialRE.com)  
DRE #00944530

# ANDERSON COMMERCIAL

---

REAL ESTATE SERVICES

# 1150 OSOS #203



**MARK ANDERSON**

805.543.1400  
798 PALM ST, SLO, CA 93401  
[AndersonCommercialRE.com](http://AndersonCommercialRE.com)  
DRE #00944530